

10 Bod Hamer, Cwm, Dyserth, Denbighshire LL18 5SL

£180,000

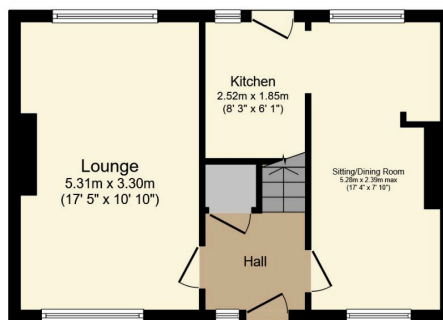
3 1 2



Standing in a semi rural location within walking distance of a local Inn is this well presented three bedroom semi detached house. Offering two reception rooms, off road parking and landscaped rear garden with Orchard, Summer House and range of Outbuildings enjoying views over open countryside. Early viewing is highly recommended.

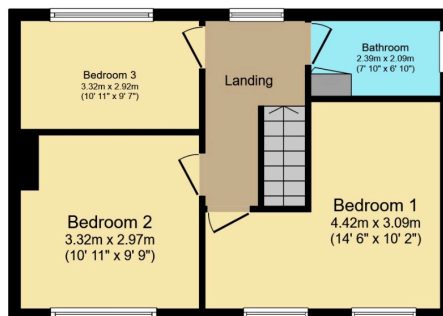
Key Features

- SEMI RURAL LOCATION
- ATTRACTIVE GARDENS
- THREE BEDROOMS
- NO CHAIN
- VIEWING ADVISEABLE
- COUNTRYSIDE VIEWS
- OFF ROAD PARKING
- DOUBLE GLAZING & OIL CENTRAL HEATING
- FREEHOLD
- EPC - TBC



Ground Floor

Floor area 41.1 sq.m. (442 sq.ft.) approx



First Floor

Floor area 41.1 sq.m. (442 sq.ft.) approx

Total floor area 82.2 sq.m. (885 sq.ft.) approx

This plan is for illustration purposes only and may not be representative of the property. Plan not to scale.

Powered by audioagent.com